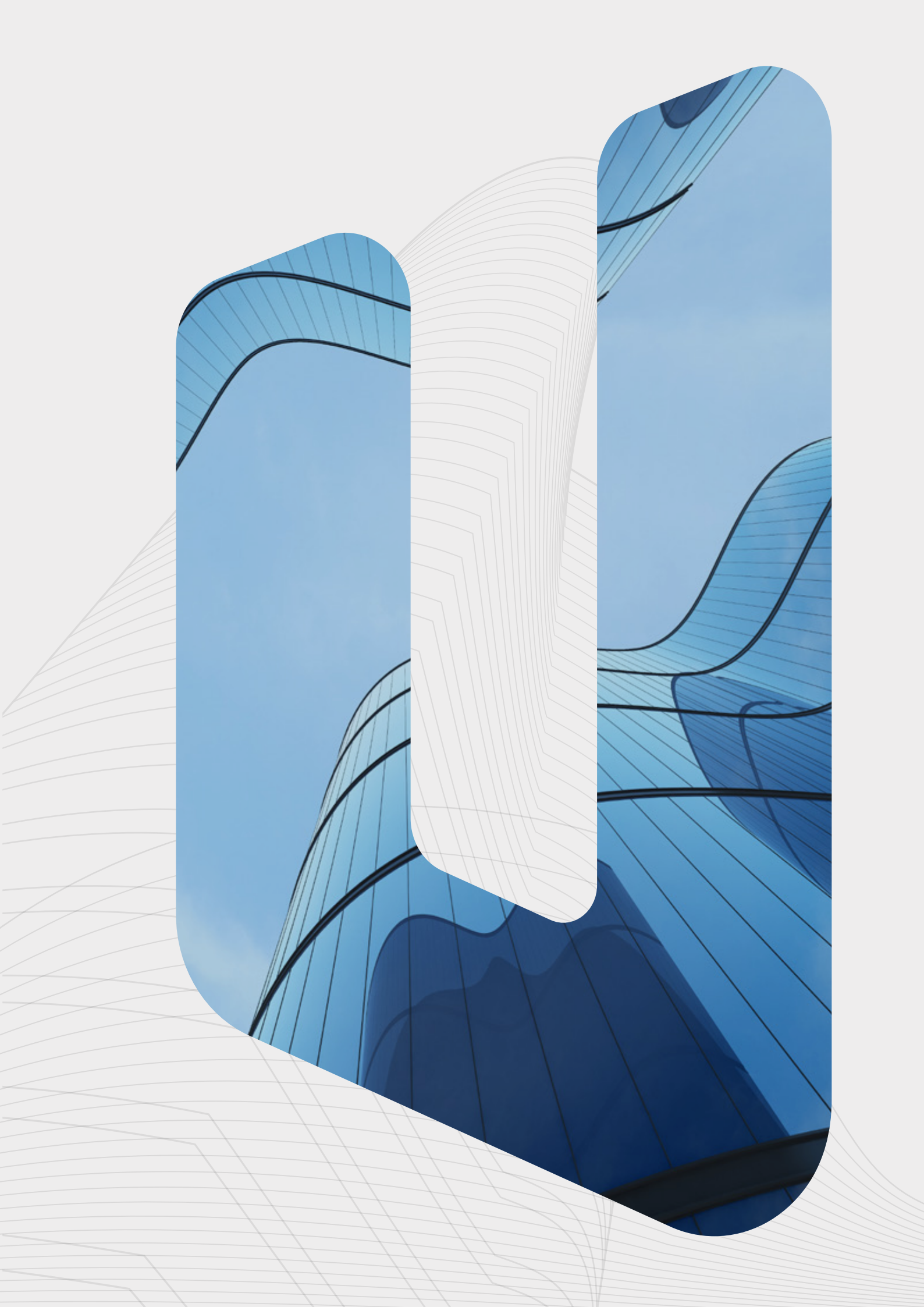




20
23

COMPANY
PROFILE





We Lead & Digitize

your project
life cycle

Welcome to Urban Dimensions

A leading architecture & engineering firm

established and currently flourishing in Saudi Arabia and the Middle East.

From small-scaled to mega projects, we offer services and consultation in the areas of Architecture, Engineering, and Construction (AEC).

We are proud to complement our Engineering Services by specializing in the leading Building Information Modelling and management (BIM) solution to help you reach the heights of innovation without leaving the pre-modernization strategies of construction behind.

CONTENTS

- 01 | Our Mission
- 02 | Our Vision
- 03 | Our Values
- 04 | Our Skilled Team
- 05 | Our Business Model
- 06 | Architectural Design
- 07 | BIM Management Modeling & Innovation
- 08 | Why BIM?
- 09 | Why us?
- 10 | Engineering Support
- 11 | Proud Collaborators
- 12 | Our Locations
- 13 | Our Projects



Our **Mission**

At Urban Dimensions, our mission is to usher in a new era of design and engineering solutions. Fueled by innovation and collaboration, we strive to create aesthetically pleasing and functional designs that exceed boundaries.

Our commitment to technological advancement and strategic collaboration propels us to deliver holistic solutions that redefine industry standards.



Our **Vision**

Crafting AEC's future with Modern Design, Adept Management, engineering skills, and BIM-driven innovation for sustainability and excellence.





Our Values

Urban Dimensions embodies a client-centric approach, fostering a dynamic work environment that harnesses employees' creativity for service enhancement.

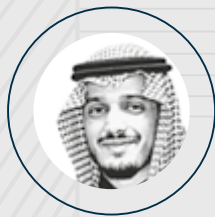
Our commitment to integrity and confidentiality drives us to maintain the highest standards of professionalism, upholding the privacy of all business matters. We hold innovation as our guiding principle, utilizing technology to redefine industry boundaries.

Above all, trust in our technical knowledge empowers us to deliver excellence in all our endeavors.





Our **Skilled Team**



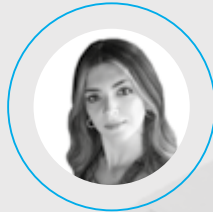
Khalid Al Saud
Executive Chairman



Roy Abou Haidar
Head of Administration
Program Manager



Fouad Houkayem
Project Manager



Maria Harika
Project Manager



Abdallah Beydoun
BIM & Innovation Specialist

We have many skilled and experienced architects, civil engineers, MEP engineers with specialization in the BIM area, and software developers that are motivated to tackle your

project, to penetrate computation and digitization in a pre-modernized project management lifecycle to tailor out a new fully automated, parameterized, and digitized project life cycle.

10+

**Average
years of
experience**

20+

**Mega
projects**

5+

Countries

30+

**Team
members**

5+

**International
Certificates**



A view of our **Buisness Model**



made for everyone...



PIF Companies



Architecture & Engineering Firms



Contractors & Subcontractors



Government



Developers & Visionaries



Consultants



Private Sector



Online Users



Our **Services**

Architectural Design

Having a full experience in the building process, Urban Dimensions provides AEC design services covering all disciplines & trades.

From design philosophy and conceptual sketches, passing through CAD drawings, calculations, studies, reports and visualization, to fully

coordinated and detailed 3D Models and documentations ready for construction.

Urban Dimensions' architects work in a multidisciplinary environment alongside structural, mechanical, and electrical engineers in addition to other specialists and serve the client's interests while ensuring internal coordination and value engineering throughout the evolution of the design.



Our architectural and interior services include:

- Design Philosophy and conceptual ideas
- Site analysis and master plan concepts
- CGIs renders and 3D visualizations and animations
- Parametric design for building's facades and skins
- Functional analyses and zoning program
- Permit file and documentations
- Detailed design & specifications development
- Interior design, FF&E, and fit-out
- Landscape and hardscape design

At Urban Dimensions, our architectural and interior design services are dedicated to crafting spaces that transcend aesthetics, embracing excellence and modernity.

With sustainability as a cornerstone, we blend innovative designs with ecofriendly practices, creating harmonious environments that stand the test of time.

Our aim is to curate spaces that not only inspire but also enhance the quality of life, reflecting our commitment to pushing the boundaries of design while ensuring a sustainable future.

BIM Management Modeling & Innovation

Urban Dimensions is specialized in Building Information Modeling and Management (BIM) such as conceptual design to fabrication of detailed components.

We focus on crafting and creating building information models on top of our design services to ensure the success of the project

lifecycle and a high standard of documentation. We bring your vision to life before operations hit the ground.

Our 3D modeling processes and VR (Virtual Reality) services not only enable us to detect construction errors ahead of time, but also give you the opportunity to view, walk through and experience your project before construction begins.

This enables you to reduce costs and eliminate errors significantly.



Our BIM services include:

- Setting up a BIM environment for projects and companies
- Setting up BIM information and requirements
- Managing the entire project life cycle
- Designing fully coordinated and clash-free 3D modelling
- Comparing models through project phases, and monitoring and reporting changes efficiently
- Estimating costs and quantity takeoff
- Creating 3D families for products, equipment, and elements
- Producing conceptual detailed design and construction documentation (Shop drawings and as-built)
- Model management throughout construction
- 4D modeling and construction sequence simulation
- 5D modeling and cost and resources management simulation
- Converting old 2D CAD drawings to reliable BIM models
- Building performance analysis

“We utilize the latest technologies, programming tools, and automation software to ensure the most accurate results in minimum time.”

We're capable of computerizing your solid buildings and systems into a digital environment to help the facility management and the maintenance team control and monitor the operation with a few clicks and steps. This provides you with long-term asset information monitoring, maintenance, and management to let you thrive commercially. Our Integrations, Technology, and Solutions services include:

- Innovation and Development
- GIS integration
- Digital twin model
- Digital Work flow and processes
- Automation
- Data Analysis, KPIs, and Dashboards
- Building performance analysis



Why **BIM**?

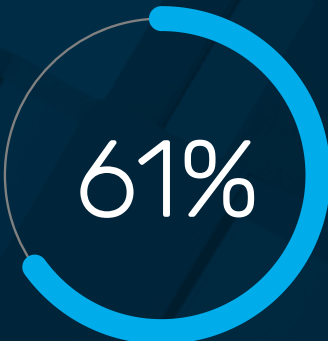
The success of any business is hidden in the application of digitization and information technology. Regardless of your capital and investment, manpower bandwidth, or your strategic planning, it's vital for your business to remain blended with the latest innovative technologies to remain ahead of the competition.

Introducing BIM, a cutting-edge technology in the field of AEC that can transform your construction business into a holistic information system. BIM is not a typical computer-aided designing tool, but a data modeling system that creates an integrated and solidified environment for all stakeholders from architects to engineers and construction team to business owners regardless of their backgrounds and knowledge.

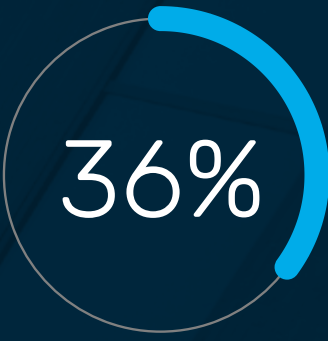


BIM

Some of the benefits of digitization and BIM integrations are:



Reduced document errors and omissions



Reduced rework



Reduce project duration



Reduced construction cost



Fewer claims / litigation

BIM

Some of the benefits of digitization and BIM integrations are:



Creating engineering 3D models & documentation that is comprehensible to all stakeholders.



Reducing errors in documentation, ultimately leading to a reduction in the project's duration and cost.



Achieve Owners' satisfaction, desire, and requirements earlier in the pre-construction phase.



Lowering the number of claims during construction.



Ensuring significant improvement in the operational and maintenance process.



Reducing the pile-on of rework.



Why us?

We are one of the leading companies originated in KSA and the Middle East to provide BIM solutions in the field of AEC.

Our BIM specialists and our architects & engineers, experienced developers, and leadership members are ready to provide solutions catered to you regardless of your whereabouts or occupation. We have you covered.



Engineering Support

At Urban Dimensions, our commitment to excellence extends beyond design and innovation.

We offer comprehensive engineering support services that encompass a diverse spectrum of specialized disciplines. From structural analysis to MEP engineering, and other disciplines, our experienced team stands

ready to provide expert guidance and technical insight.

With a steadfast focus on safety, sustainability, and efficiency, our engineering support ensures that projects not only meet but exceed industry standards, creating a foundation of reliability that our clients can trust.



03

Our structural and civil services include:

- Conceptual design
- Detailed design, calculation, and reports
- Substructure and foundations
- Superstructure
- Reinforced concrete and steel structure
- Cast-in-situ, post-tension, and precast structure
- Roads, grading, pavement, and infrastructure

Our Mechanical and Electrical services include:

- **Electrical Engineering**
Power generation and distribution, energy conservation, fire alarm systems, lighting design (interior and exterior, controls, energy audits, emergency lighting), UPS Systems, grounding and lightning protection systems.
- **Cabling Infrastructure**
Information technology cabling, infrastructure design and specification, communications pathway design.
- **Security System Design**
Access control systems, closed circuit television (CCTV) systems, digital recording, biometric access control systems, entrance/egress plan development.
- **Audiovisual System Design**
Video teleconferencing rooms, smart classrooms, audiovisual presentation rooms, tv system, public address system.
- **Mechanical Engineering**
Heating, ventilating and air conditioning (HVAC), hvac controls, central plant design, boiler, chiller plant design, smoke evacuation and control, exhaust and make-up air systems, refrigeration systems, building energy modeling, energy saving automation systems, process piping.
- **Plumbing**
Domestic water systems, gas systems, sanitary, storm and hazardous wastes, treated water supply systems, fountains, waterfalls and pools, medical gas systems.
- **Fire Protection**
Fire suppression systems, sprinkler systems, dry and wet chemical extinguishing systems.

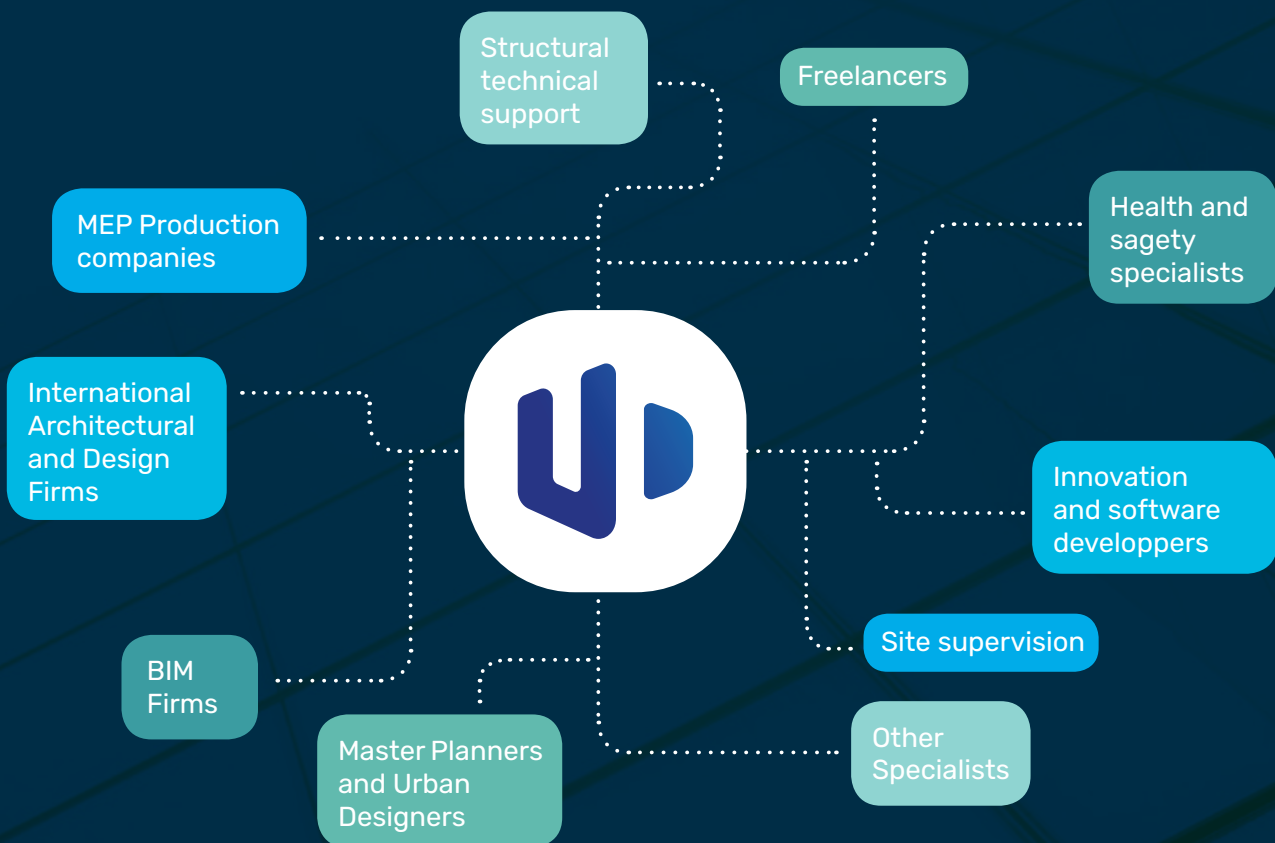
And other specialties that include but not limited to:

- Health, life Safety and Civil defense
- Facade Engineering
- Transportation
- Thermal and Acoustic
- Marine Works
- And Others



Proud Collaborators

We take immense pride in our strategic collaborations with a diverse network of industry-leading companies and experts. These collaborations span across disciplines and extend to visionary partners who share our commitment to excellence.






Our Locations



KSA


Head Office

-  Huna Center, Office 13,
Takhassusi, Al Mathar Ash
Shamali, Riyadh



Lebanon

Technical back office

-  Center BC 1024, El Maten,
Mazraat Yachouh Main
Road, 4th Flr



Our **Projects**

01 Red Sea Southern Dunes

— Phase 1



We tailored the project's BIM requirements and BIM modeling for the structure and the MEP infrastructure at LOD 400 and LOD 500, and implemented GIS services in Red Sea Southern Dunes Phase 1.



Date: 2021

Location: Red Sea, KSA

Status: Completed

Client: TRSDC (The Red Sea Development Company) / AlBawani

02 Red Sea Southern Dunes

— Phase 2



We performed our services related to MEP BIM Modeling at LOD 400 and LOD 500, and GIS integration in this project..



Date: 2021

Location: Red Sea, KSA

Status: Completed

Client: TRSDC (The Red Sea Development Company) / AFCC

03 EIR NEOM



This project was executed by Urban dimensions and Modelical. We provided a complete set of BIM information and requirements.



Date: 2022

Location: NEOM, KSA

Status: Completed

Client: NEOM

04 Dariyah Gate - — Super Basement



Urban Dimensions worked on the project's BIM requirements and BIM modeling for the MEP package at LOD 400 and LOD 500, Design Review, and technical engineering support team presence on site for tunnels and basements.



Date: 2022

Location: Riyadh, KSA

Status: Completed

Client: FGC

05 VR MEWA

Date: 2022

Location: Riyadh, KSA

Status: Completed

Client: PWC

This project was based on the implementation of BIM 3D modeling into a Virtual Reality model to provide a digital informative animation for the project.

06 Royal Stables

Date: 2022

Location: Riyadh, KSA

Status: Completed

Client: PWC

We provided a High-level design brief and a master plan proposal based on benchmarking and research with digital assistance and parametric studies to achieve the client's goals.

07 Muzahmiya Land

Date: 2022

Location: Riyadh, KSA

Status: Completed

Client: Private Sector

Urban Dimensions worked on the Master Plan Design and animation based on benchmarking and research with digital assistance and parametric studies to achieve the client's goals.

08 Sheybarah South, — Hotel #10



We performed our services related to MEP BIM Modeling at LOD 400 in this project.



Date: 2023

Location: Red Sea, KSA

Status: Completed

Client: Red Sea Global (RSG) /
Al Tamimi

09 The Warehouses - Duba



We performed our services related to MEP BIM Modeling at LOD 400 in this project.



Date: 2023

Location: Duba, KSA

Status: Completed

Client: NEOM / Al Tamimi



Interested? Get in Touch to Tackle Down your Project

We are ready to offer you a free of charge consultation session and advise you on your project life cycle

Please fill in your details in the feedback form. We will reach out within 24 hours depending on your query to take your request forward.

Huna Center, Office 13, Takhassusi, Al Mathar Ash Shamali, Riyadh, KSA
Call us on: +[966] 50 136 0606
contact@urban-dimensions.com | urban-dimensions.com